

1695830

2824 Rue Sans Famille .

289900



Exterior Front

The Sans Famille neighborhood is also a work of art. Tucked away just outside the I-440 Beltline near Rex Hospital convenient to downtown and RTP, a winding loop road, the Rue, leads to several intimate cul-de-sacs some over looking a small lake.



Living Room

This home has the best of both worlds. A handsome brick parking pad in front opens onto a small cul-de-sac, while a concrete driveway accesses the loop Rue. Note the easy access - there are no front steps into the house.



Exterior Back

The neighborhood canvas is a unique composition of modest, mostly cedar sided homes intricately located close together yet providing remarkable privacy and attractive landscaping.



Dining Room

The vaulted great room catches the morning sun. This is a versatile floor plan with a total of 3 bedroom and 3 baths, including master suites on the main and lower levels.



Exterior Back

The east facing deck is a treetop get-away.



Kitchen

A lighted pottery display shelf provides a nice focal point in the modern kitchen with a skylight and lots of cabinets.

1695830

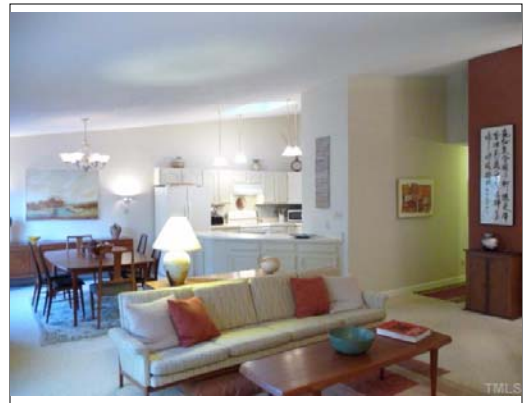
2824 Rue Sans Famille .

289900



Other

Even the stairs to the basement have character, serving as yet another gallery space.



Interior Space/Layout

The hall to the right, offering more gallery space, leads to the 1st floor master suite and the 2nd of the 3 bedrooms.



Bedroom

The 3rd bedroom on the lower level is the second master or guest suite.



Master Bedroom

The modest exterior hides a big master bedroom and 2,051 finished square feet.



Studio/Study/Office

The 22 ft long artists studio is not included in the finished sqft. It is versatile space that could be converted back to garage. An adjacent concrete floored crawl space and exterior room provide lots of storage.



Bedroom

The large 2nd bedroom, now used as a study, has a versatile nook (not visible here) for a desk or whatever. THESE DESCRIPTIONS ARE A WORK IN PROGRESS. CHECK BACK FOR REVISIONS AND ADDITIONS.