



**1415 Park Drive
Cameron Park**

c 1960.
4 BR. 4.5 Baths.
0.17 acre lot.
\$589,500.
tms#1718295.



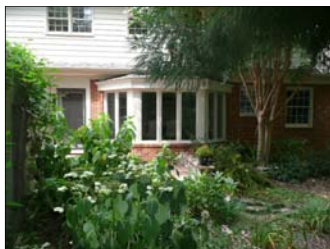
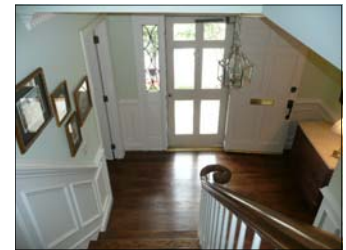
Features



Multiple surprises!

The scenic hillside location hides:

- An attractive in-law suite or apartment.
- A level fenced garden & brick patio in back.
- Parking next to kitchen with rear alley access.
- 3,539 sqft finished including apartment.
- 613 sqft unfinished for storage and workshop.



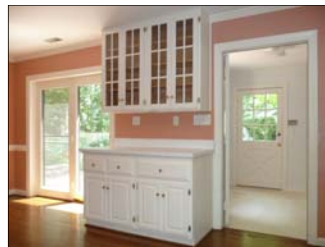
Empty nesters and retirees

will value the huge 1st floor master bedroom suite with a fireplace, and the great storage throughout the house. Worth mentioning again is the easy access from car to kitchen, and the economic and other benefits of an in-law suite or apartment.



The Brady Bunch

will appreciate the two bright upstairs bedrooms (with lots of closets) and the options for using the apartment as a family room, rec room or teen suite. The unfinished space could be finished or used as for exercise room, storage and workshop.



York Simpson
Underwood Realty

3700 Computer Dr, Ste 100
Raleigh, NC 27609
919 782-6641

Peter Rumsey, Broker

919.971.4118

rumsey@mindspring.com

Copies of this flyer, floor plan, maps and much more can be downloaded from www.peterRumsey.com

Unique homes • Fresh ideas • Proven success

Peter lives in Historic Oakwood where he moved the endangered historic home shown at the left and one other to a site near the Governors Mansion. He works with buyers and sellers throughout the Triangle area.

