



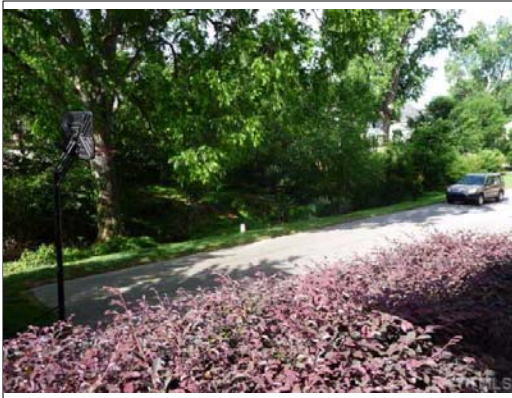
Exterior Front

This unique home, setting and circumstance merit the overused phrase "Must see". Go by the Oakwood Common toddlers park 2 blocks away at East and Boundary Streets, the Oakwood Dog Park on Brookside Dr, and Krispy Kreme and the other Person St shops.



Den/Family/Great Room

A wall of windows opens onto a custom deck and winding stone bordered Georgetown garden in back.

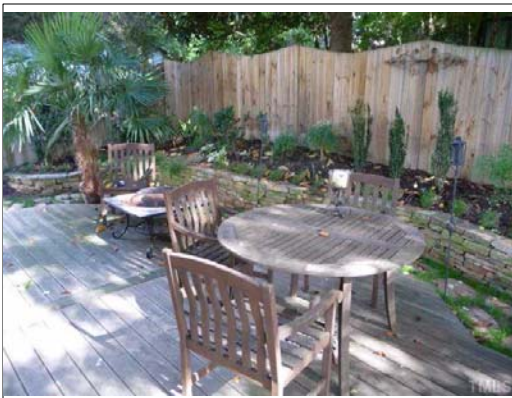


Land/Lot

Drive down dead-end Pace St and view the tree shaded creek and adjacent new homes. The lot includes the creek and the private section of Pace St, dead-ending here, that is owned with the 3 adjacent homes to the west.

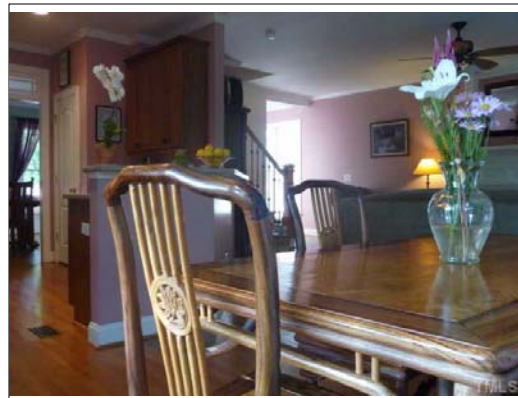


Breakfast Room



Back Yard

The fenced Georgetown garden in back has handsome privacy fencing.



Den/Family/Great Room

The view from the breakfast room includes the dining room through the kitchen and the fireplace in the living room.

1729198

541 Pace Street

449000

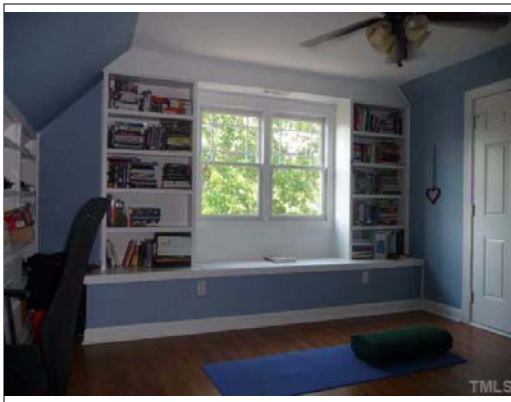


Master Bedroom

The south facing MBR overlooks the creek in front. The MBR tile bath has separate tub and shower and a walk-in closet.



Kitchen



Studio/Study/Office

The 4th bedroom on the third floor is now used as an office and Yoga studio. Note the hardwood floors.

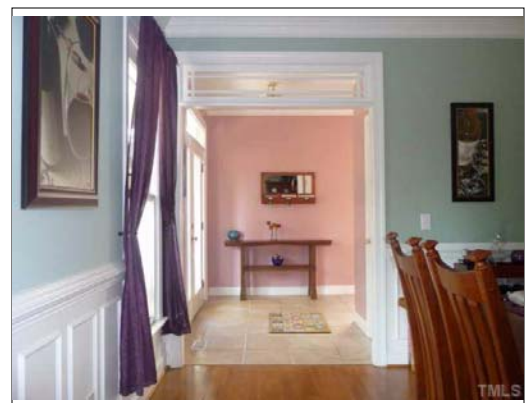


Dining Room



Bonus Room

The 16 ft long second room on the third level also has built-in shelves and a desk.



Foyer

Architecturally detailed transome windows and a tile floor are part of the entrance foyer.