



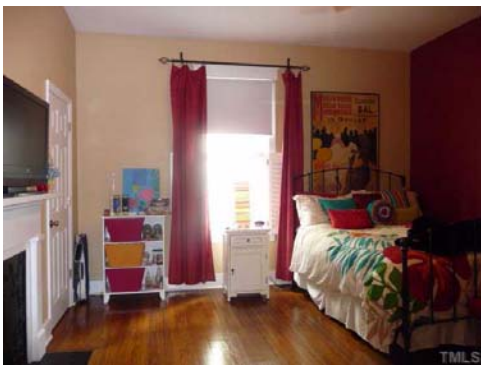
This is the pot-of-gold outside the family room window and rear entrance. An ideal flow for entertaining in and out.



The master bedroom overlooks and is just steps away from the back garden and the hot tub.



The versatile middle bedroom, now used as an office and guest room, opens to both the central hall and the master bedroom.



The 3rd bedroom includes a decorative fireplace and wood floors.



Two sets of double French doors with transom windows lead to the large front porch.



A brick-paved parking pad and winding, landscaped path leads back into the fenced garden with on-grade access to the rear entrance.



The Oakwood Common is a play area for toddlers. Canines play at the nearby off-leash Oakwood dog park.



Family friendly Friday night concerts are a neighborhood gathering place on the lawn of the Mordecai Historic house and park that is located in the nearby Mordecai national historic district.