

Mid-Century Modernist Ranch

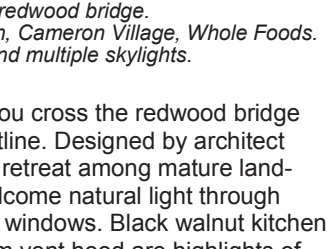
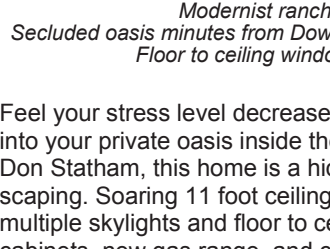


3700 Swann St, Raleigh

ca. 1963.
3 BR. 2 baths.
1991 sqft finished.
0.43 acre lot.
Circle Driveway
Double carport
\$459,500



Features



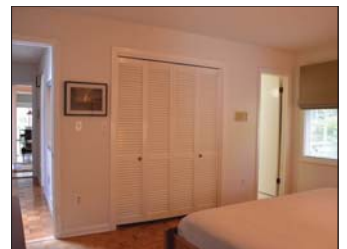
*Modernist ranch with redwood bridge.
Secluded oasis minutes from Downtown, Cameron Village, Whole Foods.
Floor to ceiling windows and multiple skylights.*

Feel your stress level decrease as you cross the redwood bridge into your private oasis inside the beltline. Designed by architect Don Statham, this home is a hidden retreat among mature landscaping. Soaring 11 foot ceilings welcome natural light through multiple skylights and floor to ceiling windows. Black walnut kitchen cabinets, new gas range, and custom vent hood are highlights of the chef's kitchen.



Mature landscaping protects this modernist home from the harsh rays while also providing plenty of privacy on all sides of the home. The creek in the front yard provides a serene backdrop and entertainment through friendly bullfrog calls and other wildlife.

Sellers have meticulous records of all maintenance and updates. This home really is a one-of-a-kind find.



Hilary Stokes

Hilary's commitment to thoughtful design and walkable communities throughout the Triangle is found in her recent renovation of a mid-century modern home near Cameron Village.



Allen Tate Realtors
3201 Glenwood Ave
Raleigh, NC 27612
919 719-2900

Peter Rumsey, Broker
919.971.4118

Hilary Stokes, Broker
919.621.2252

Unique homes • Fresh ideas
Proven success.

Peter lives in Historic Oakwood where he moved endangered historic homes to sites near the Governors Mansion. He works with buyers and sellers throughout the Triangle area.



www.HilaryStokes.com