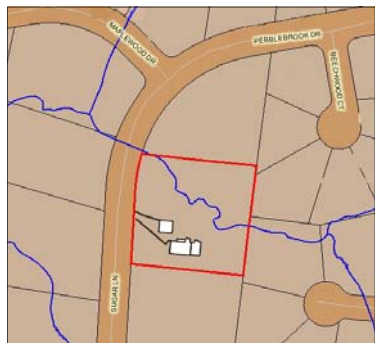




A mountain retreat

Circa 1981.
1.22 acre lot.
1,650 finished sqft.
3 BR. 2 Baths.
2 car garage.
Bedroom balcony.
2 tiered deck.
Cedar sided.
\$179,900.
tms#909451.

Check my web site for detailed floor plans, room sizes, disclosures, updated copies of this flyer, and much more.

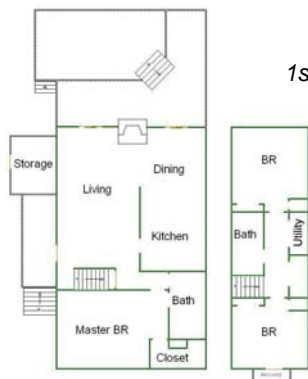
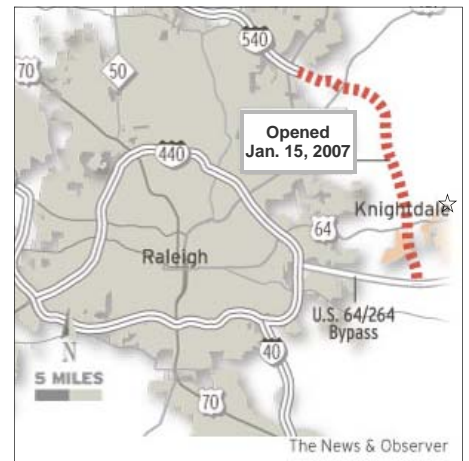


A creek runs through this 1.22 acre mountain retreat with plenty of room for garden and play. Paths lead to hide-a-ways in the wooded section of the lot.



Just minutes from Raleigh

Located approximately 6-7 miles from I-440 on Highway 64 just past the new I-540 interchange (across from the new Lowe's), the scenic Maplewood Subdivision includes many larger homes.

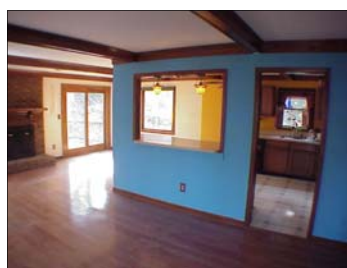


1st floor MBR

A grand great room with a semi-open kitchen overlooks a two level deck in back. The front upstairs bedroom opens onto a balcony. There is a large 1st floor master suite, 3 BR's total.



The oversized 28x24ft 2 car garage has room for a workshop.



Peter Rumsey, Broker
919.971.4118
rumsey@mindspring.com

More pictures, information and links may be found at:
www.peterRumsey.com

Unique homes • Fresh ideas • Proven success

Peter lives in Historic Oakwood where he moved the endangered historic home shown at the left and one other to a site near the Governors Mansion. He works with buyers and sellers throughout the Triangle area.

