

Boylan Heights Historic District



**713 Dorothea Drive
Raleigh, NC 27603**

ca. 1920.
2 BR. 1 bath.
1,293 ft plus ...
190 sf garage/workshop
120 sf drum/art studio.
248 sf basement.
0.19 acre lot.
\$350,000.
tms#1909127



Features

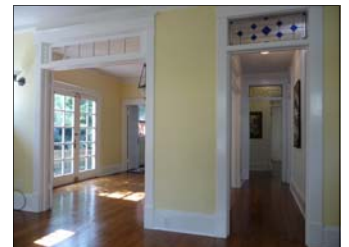
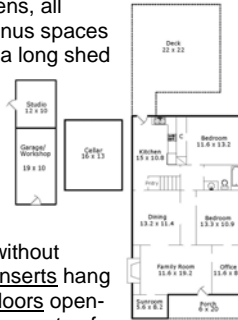


*A Craftsman style, urban jewel.
Think of it as a jewel box
with 7 bonus spaces.
New roof and HVAC in 2012.*

Three of the 7 bonus spaces open to the living room. A north facing sun room, to the left of the fireplace, overlooks the front yard and an office/studio is located near the front door. The front porch

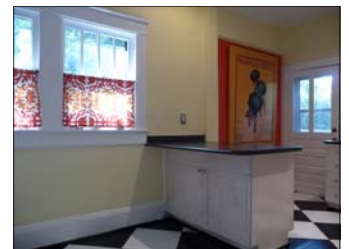
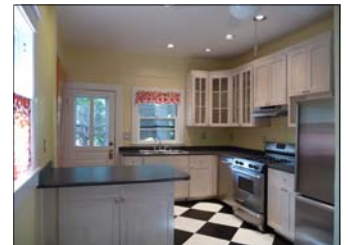


overlooks a winding brick path and lush gardens, all surrounded by a white picket fence. Three bonus spaces are in back. A big, multi-level deck overlooks a long shed that hides a wired garage/workshop and separate acoustically dampened drumming studio most recently used a potting studio. The 7th bonus is the daylight basement with practical built-ins including shelves, peg board and a 12 foot long work bench. The versatile floor plan allows you to move directly from the front door to the center hall without disrupting the living room. Five leaded glass inserts hang in the transoms above the original six-panel doors opening into the center hall. The dining room has two sets of French doors, one set leading to the side yard. The modern, eat-in kitchen and tile bath are bright and sassy. The back bedroom has 4 windows and a wall of closets. A door connects the 2nd bedroom with the front office/studio space which could also serve as a nursery or dressing room. This bedroom lacks a closet, characteristic of homes built in the early 1900s.



The versatile floor plan allows you to move directly from the front door to the center hall without disrupting the living room. Five leaded glass inserts hang in the transoms above the original six-panel doors opening into the center hall. The dining room has two sets of French doors, one set leading to the side yard. The modern, eat-in kitchen and tile bath are bright and sassy. The back bedroom has 4 windows and a wall of closets. A door connects the 2nd bedroom with the front office/studio space which could also serve as a nursery or dressing room. This bedroom lacks a closet, characteristic of homes built in the early 1900s.

Drive by the new and renovated homes in the 600 block of Dorothea. See reverse for neighborhood map showing surrounding treasures & history.



Hilary Stokes

Hilary's commitment to thoughtful design and walkable communities throughout the Triangle is found in her recent renovation of a mid-century modern home near Cameron Village.



Allen Tate Realtors
3201 Glenwood Ave
Raleigh, NC 27612
919 719-2900

Peter Rumsey, Broker
919.971.4118

Hilary Stokes, Broker
919.621.2252

**Unique homes • Fresh ideas
Proven success.**

Peter lives in Historic Oakwood where he moved endangered historic homes to sites near the Governors Mansion. He works with buyers and sellers throughout the Triangle area.



www.HilaryStokes.com

www.peterRumsey.com