



Heather and Randall Scott rebuilt and enlarged this classic 1923 bungalow as their long term family home. Alas, no sooner was the house completed than they answered the siren song of their ultimate dream, a 2nd Empire c.1871 classic on 0.8 acres.



The house is impeccable and practical, indoors and out, no place more so than the kitchen that sparkles in the morning sun. The Thassos marble mosaic black splash is a work of art.



Evoking memories of historic lodges in the West, a large stone fireplace is the centerpiece of the outdoor kitchen, dining and gathering space with an adjacent double shed. <BR/>



Sometimes called piazzas in the South, the outdoor living area is shaded by a pergola with rough cut Cypress beams. A Mosquitonix barrier around the fenced back yard sprays organic chrysanthemum oil for mosquito protection. <BR/>



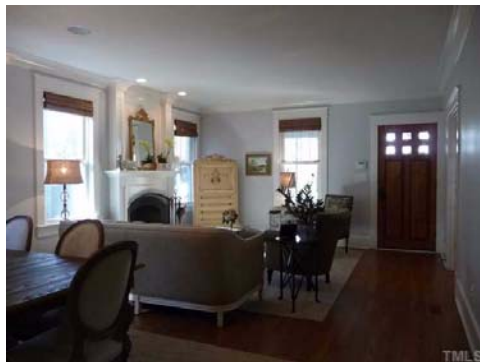
The outdoor kitchen includes a grill, four burners and refrigerator. One half of the split utility building provides space for a full sized refrigerator, pantry and dish storage. The table and furniture convey with an acceptable offer. <BR/>



The bright breakfast area opens to a raised stone-walled patio which is connected by winding paths to the outdoor living area and nearby driveway.



Bright, open and elegant. The old house character has been retained while many walls have been moved or removed, <BR/>



All new - roof, plumbing, electric, dual zone HVAC, insulation, energy star windows, appliances, fixtures, tankless water heater and much more. The fireplace was completely rebuilt. <BR/>



French doors open to an office/study in the front, The family room is steps away from the kitchen.