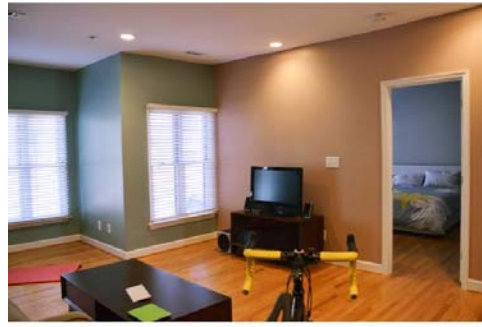




TMLS

The kitchen opens to the entertainment and recreation room. The door lead to the guest half bath.



TMLS

You are headed to the master suite. Note the alignment of the exercise bike.



TMLS

The master 13x12 bedroom.



TMLS

Glass and stone tile, granite vanity, an air jet tub and glass tub enclosure all were part of the recent remodel.



TMLS

Brick pathways connect sections of Founders Row and lead to the gated parking area. This is the view from your exterior door that opens to the porch and then into your unit.



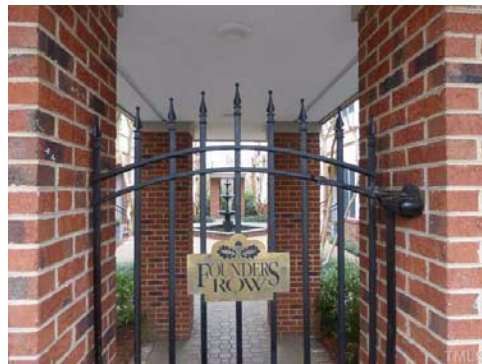
TMLS

Imagine the view from your private porch when the trees are in bloom. A door to the left opens into a storage closet.



TMLS

Brick pavers line the interior courtyard, one of the two in Founders Row.



TMLS

A handsome covered gate greets your guests on E. Davie Street, across from Artspace and the City Market.



TMLS

Artspace across E. Davie St is home to nearly 30 working art studios and is ground zero for the monthly First Friday Art Walks.