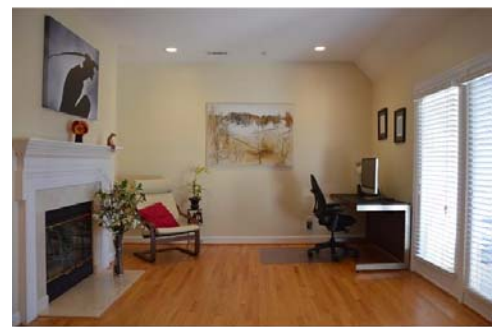




In spring and summer, mature trees shade the Founders Row windows that look out on Raleigh's skyline and Artspace across the street. The left tower is the new Red Hat headquarters. Check back for pictures of tree in bloom.

Founders Row is a one of a kind downtown alternative to living in a tower condo. Your covered, south facing porch overlooks a courtyard and brick path leading to gated parking.

The big surprise is the one of a kind floor plan in Founders Row. It is open front to back. Walls were removed as part of an extensive studs out remodeling roughly five years ago. <BR/>



Once a second bedroom, this versatile space now is used now as a recreation and entertainment center.

This is the other half of your view when you enter which includes the wood burning fireplace. New hardwood floors were added during the remodel.

This is also a versatile space.



The front living room opens onto the front porch which has a second door that opens to the world. This arrangement provides privacy on the porch and in the living room.

Bookshelves line the wall of the dining room.

Granite tops, tall furniture quality cabinets, stainless appliances, all were part of the remodeling.