

Gatewood Subdivision



**1501 Westchester Rd
Raleigh, NC 27610**

**2,171 versatile sqft.
0.22 acre lot.
5 bedrooms.
2 baths.
Plus office/studio.
Much more.
\$189,000.
tmls # 1976379**



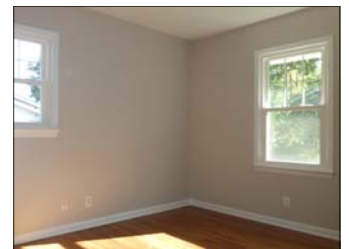
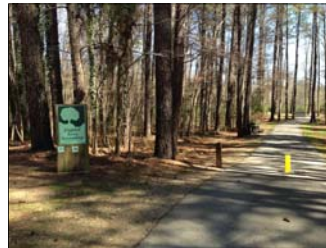
Features



[Slide show with prose at www.peterRumsey.com](http://www.peterRumsey.com)

- **New** - All windows, heat & central air, kitchen & appliances, roof, refinished hardwood floors, 200 amp electrical panel, more.
- **Location** - Inside the Beltline close to downtown and I-440. Walk to the Raleigh Greenway.
- **Unique** - Watch the sun set from the one-of-a-kind 37'x11' upper level porch. Entertain in the 24'x16' family room opening onto a big brick patio.
- **Options** - In-law suite, 5 bedrooms (3 up, 2 down) plus office/studio (with outside entrance). Park & play hoops on big parking pad in back.
- **Bright** - The morning sun brightens the front living room & 3 bedrooms. The afternoon sun shadow is a work of art on the porch.

A tornado in April 2011 spared this house but damaged many nearby homes in the Gatewood Subdivision. Rebuilding the neighborhood has energized old timers and new comers alike, helping to create an even closer sense of community.



**Listening. Investigating.
Learning. Explaining.**

Mickey lives in Oakdale where he is enlarging his home. He helps buyers and sellers explore their options to make well-informed decisions as they navigate the real estate process.



Allen Tate Realtors
3201 Glenwood Ave
Raleigh, NC 27612
919 719-2900

**Peter Rumsey, Broker
919.971.4118**

**Mickey D'Loughy, Broker
919.559-5508**

**Unique homes • Fresh ideas
Proven success.**

Peter lives in Historic Oakwood where he moved endangered historic homes to sites near the Governors Mansion. He works with buyers and sellers throughout the Triangle area.



www.allentate.com/MickeyDLoughy

www.PeterRumsey.com