

2516 Oxford Road

MLS#: 1972830
List Price: \$395,000



This home on 0.37 acres offers unique options to enjoy the existing big, bright spaces with sparkling hardwood floors, or to remodel and/or expand the home in a traditional or contemporary style.

Overlooking Fallon Park, the house is a short walk away from the Crabtree Creek Greenway/Park and two schools, JY Joyner and Our Lady of Lourdes. Map available in MLS Documents.

Native grasses, exotic plants and stone paths are part of the front yard created by a former owner, several times removed, architect Louis Cherry, with design input from David Brown, landscape architect.



A wall of windows in the big 18x12 ft Living Room overlooks the yard and Fallon Park.

The afternoon sun sparkles on the hardwood floors, which are found throughout most of the house including the three bedrooms. This is the view from the Dining Room.

The morning sun brightens the even larger 23x11.2 ft Family Room in back with built-in bookshelves flanking a masonry fireplace.



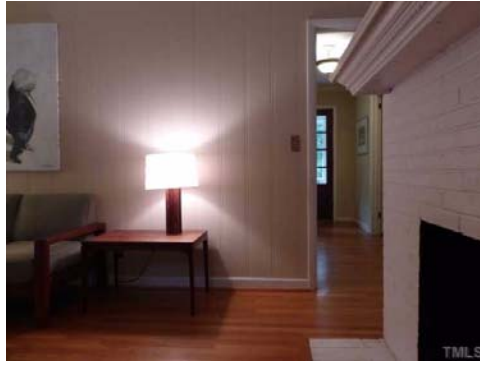
Enjoy the indoor-outdoor convenience of a brick patio, over 50 long, behind the Family Room and the adjacent Kitchen.

The patio is a great entertainment space and kids play area.

Hidden in the trees behind the patio, in the fenced back yard, is a tree house and basketball pad. The back board is borrowed.



Indulge your inner architect. Plan a great room by removing the wall between the LR and FR. This was one dream of the sellers.



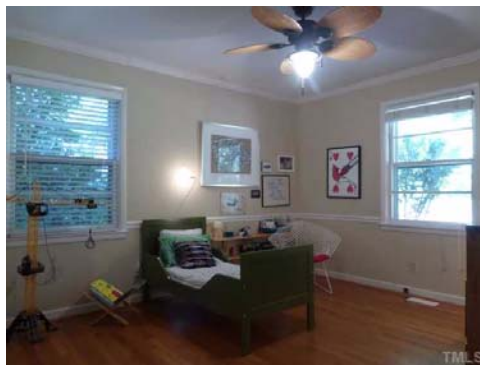
A new job in Switzerland has changed the plans of the sellers who occupied the house for two years as lease-purchase tenants. This is the view looking from the FR towards the Living Room and entrance Foyer.



Another plan of the sellers was to expand the kitchen and DR in to the adjacent carport.



The sellers also explored expanding the already spacious Master Bedroom and bath with an addition to the front of the house.



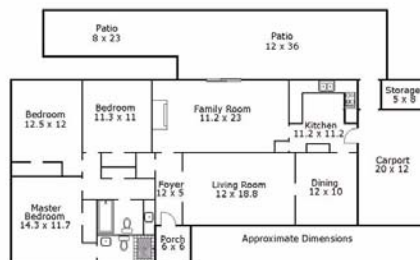
The back corner bedroom.



The third bedroom. The bedrooms have double-wide closets that are easily accessible. .



The hall bath includes the original vanity and pink tile, now back in style.



The existing floorplan illustrates the opportunities of removing the wall between the LR and DR, and expanding the Kitchen and/or the Dining Room into the carport.



This is the view from the Kitchen with the LR and DR to the left and FR to the right.



The existing kitchen opens through a side door to the carport.



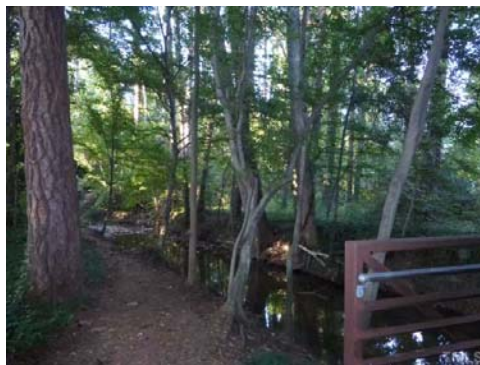
Room for two cars is provided by the carport and an adjacent parking pad.



The sellers, and Louis Cherry before them, have explored options for relocating a parking area midway along the driveway.



Fallon Park is a jewel with open fields and a picnic pavilion.



Fallon Park includes a winding path along the creek that is crossed by picturesque bridges. The creek leads to the Crabtree Creek Greenway and park to the northeast.



This location is a bulls eye, which is why the map is included a second time. Walk or bike to Five Points, North Hills, parks, schools and much more. Glenwood Ave is at the bottom left corner of the map.