

# 1315 Mordecai Drive

MLS#: 1975257  
List Price: \$435,000



Located in the scenic heart of Historic Mordecai, this Cape Cod home built in 1942 is much bigger than it looks.



The addition on the left includes a true MBR suite, an even bigger Bonus Room/4th BR upstairs and nice porch to catch the morning sun just outside the modern kitchen.



The 0.26 acre lot and a half is fenced in back with a detached 18x10 ft garden shed / workshop.



The Sun Room in back was another addition.  
<BR/>



The Sun Room opens to a new patio/deck that is also accessed from a hall near the Dining Room and Kitchen.



The 17x15 ft Sun Room addition includes a half bath. Note the hardwood floors that are found in most of the downstairs and in the two older upstairs bedrooms.



Living Room bookshelves flank the door to the Sun Room. The handsome stone fireplace is decorative.



Entering the house, you find intact the classic character of the original house built in 1942. The original two upstairs bedrooms and full bath are accessed by steps near the front door.



This is not your grandparents Dining Room that now overlooks the back Deck/Patio.



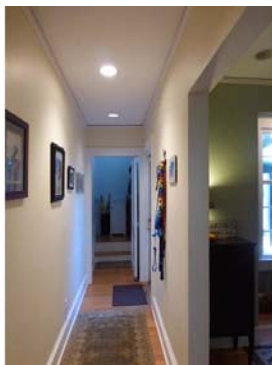
Nor is it your grandparents kitchen.



Solid surface counter tops are one of the many features of the modern Kitchen.



The passage leads to the two story addition on the south end of the house. The addition included the east facing front porch accessed from the Kitchen.



The hallway leads to the Patio/Deck and back steps to the second floor Bonus Room/4th Bedroom. Think of it as gallery space for family pictures.



The big, bright Bonus Room/4th Bedroom (19x18 ft) is great flex space.



Finally, the Master Bedroom. It is big (16x14 ft) and bright.



With hardwood floors and a walk-in closet.



And a real Master Bath.



The two bright upstairs Bedrooms in the original house each have windows on three sides. The north BR shown here has three closets.



# 1315 Mordecai Drive

MLS#: 1975257  
List Price: \$435,000



This is one of the several nearby parks serving the Mordecai neighborhood. Walk a few blocks further to the Stanbury Restaurant and Escazu Artisan Chocolates.



During the warmer months family friendly neighborhood concerts are a gathering place on the lawn of the Mordecai Historic House and park.



The Station is a recent addition to the Person Street shops that include PieBird restaurant, Rapid Fitness, a music store & venue, small book store and a pharmacy/lunch counter dating back to 1910.



More recent Person Street openings include the Wine Merchant, Yellow Dog Bakery, Oak City Cycling and Person Street Bar. Standard Grocery will open soon offering gourmet meals and quality groceries.



The Raleigh City Farm is adjacent to the shops shown above and across the street from William Peace University



At the nearby Seaboard Station you have your choice of over 6 restaurants, a wine store, pet shop, ACE hardware, Logan nursery, specialty shops and more, all next door to William Peace University.



Walk everywhere. This view, looking south from the new NC AIA HQ, includes the old capitol dome, the newer NC Legislative Building, state offices, museums and downtown office towers.