

# Cameron Park National Historic District



**300 Hillcrest Rd  
Raleigh, NC 27605**

**ca. 1917.  
4 BR. 2.5 baths.  
3,048 finished sqft.  
Basement & w/u attic.  
0.4 acre lot.  
Garage.  
\$768,000.  
tms#1930724.**



## Features



*0.4 acre, elegant Cameron Park estate home.  
2 sun porches, one north, one south facing.  
Built-in shelves in library and 4th bedroom.  
Garage, full basement and walk-up attic with cedar closet.  
Newer dual zone HVAC and slate roof.*

A symphony of light describes the play of sun and shadow through the window-walled rooms, beginning with the glass enclosed portico. Ample proportioned grand rooms and a versatile and practical floor plan invite Thanksgiving feasts, parlor concerts and quiet reflection.

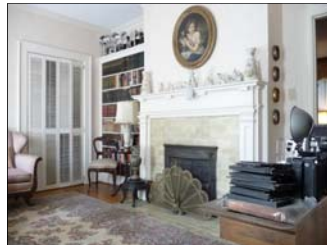


Nestled in the heart of Cameron Park between two neighborhood parks, the home is within easy walking distance to downtown, museums, schools, universities, shopping and entertainment.

Professional photographer, amateur pilot and passionate parachutist are among the past pursuits of the seller, Georgea White, whose grandfather, George H. L. White, the founder of White Dairy in 1911, built the house beginning in 1914.



NC Rehab Tax Credits may be available for updating the kitchen, baths, paint, electrical systems and remodeling projects such as enlarging the kitchen to include the existing unheated, enclosed back porch. For more information call or go to [hpo.ncdcr.gov](http://hpo.ncdcr.gov) and [rhdc.org](http://rhdc.org).



### Hilary Stokes

Hilary's commitment to thoughtful design and walkable communities throughout the Triangle is found in her recent renovation of a mid-century modern home near Cameron Village.



Allen Tate Realtors  
3201 Glenwood Ave  
Raleigh, NC 27612  
919 719-2900

**Peter Rumsey, Broker**  
919.971.4118

**Hilary Stokes, Broker**  
919.621.2252

Unique homes • Fresh ideas  
Proven success.

Peter lives in Historic Oakwood where he moved endangered historic homes to sites near the Governors Mansion. He works with buyers and sellers throughout the Triangle area.



[www.HilaryStokes.com](http://www.HilaryStokes.com)

[www.peterRumsey.com](http://www.peterRumsey.com)