

## Address: 600 Edmund Street

Media	Type	Description (if available)
<a href="#">#1 - Edmund600-flyer-p2-0...</a>	Acrobat PDF (Public)	Neighborhood Map



The large 0.22 acre corner lot provides options for gardening, off-street parking, outbuildings and expansion. The Oakwood (dog) Park two blocks away is a second yard for kids and pets.



The 1950s modern style has character and light. So does the new bathroom, walk-thru closet and daylight laundry (see below).



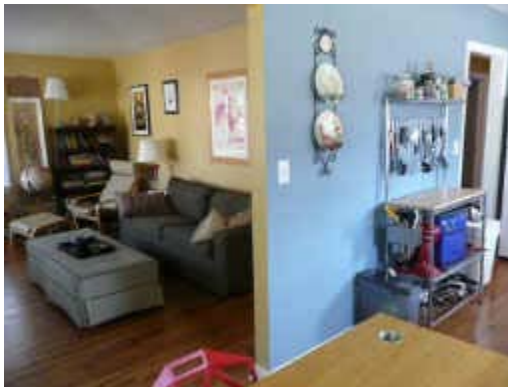
Edmund St is a quiet tree lined street and eclectic family neighborhood. Many homes have been renovated, and new homes built and quickly sold nearby (visible through the trees at the end of the Street).



Move in, hang your pictures and relax.



The second bedroom is used as an office, music and guest room.



Open floor plan.



The main bedroom catches the morning sun in the southeast corner of the house.



High tech or traditional - Your decorating choice.



The new walk-thru closet connects the main bedroom with the daylight laundry.



More options - Add cabinets, your mothers pie safe or open shelves on the left wall of the bright kitchen.



Better than the new condos, the recently remodeled bath has subway white tile and updated vanity, lighting and fixtures, conveniently located next to the new laundry room with a deep sink.



The park is surrounded by other family neighborhoods. Click on Neighborhood Map above.

TEMPO Software Copyright © Marketlinx, Inc. 1997-2008 All Rights Reserved V3.0  
 All Information contained herein is for the exclusive use of authorized MLS Subscribers  
 Copyright © TMLS 2001-2008 North Carolina Triangle MLS, Inc. All Rights Reserved  
 Support: [Email Help Desk](#) or Call 919-654-5419