



Bigger than it looks, this 3 bedroom, bright, open gem has it all on 0.32 acres.



New windows, roof, gas HVAC, appliances, fixtures and much more were part of a major renovation in 2007 by the seller who lives across the street.



Sitting on the interior border of the Belvidere and Woodcrest neighborhoods, the location is convenient to both downtown and I-440 beltline. The 0.32 acre lot includes a gravel driveway and plenty of play and garden space.



This is one of the few Belvidere homes that has an entrance foyer/sun room. South facing, the room catches the sun throughout most of the day.



The aha moment is when you step inside. The entire left side is a great room with hardwood floors leading back to a big deck and modern kitchen.



The kitchen area was also updated in 2007.



The great room opens onto the large porch.



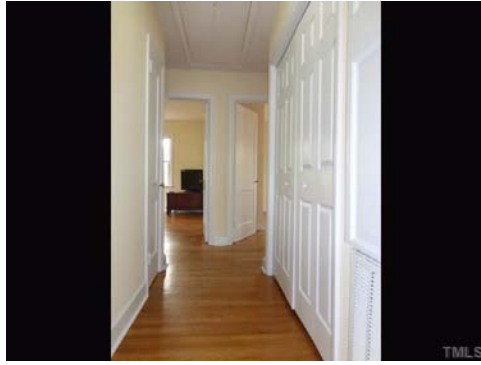
The view from the back of the great room.



The view from the kitchen window.



The hall leads past the washer/dryer space to the 3 bedrooms.



Nice floors.



The front corner bedroom.



The back corner bedroom overlooks the back yard.



The front, middle bedroom has in some similar houses been opened to the living room, creating a flex space - den/office/studio/guest room - that is also part of the social areas of the house.



Bathroom fixtures were also update along with plumbing in 2007.



Art gallery opportunities are offered by the long interior wall. This is the wall that could be opened to the middle bedroom creating an even greater room.



Nice.



A brick walkway leads to the front door from the gravel driveway.



Much bigger than it first appears.



Big yard.



Walk to nearby Lions Park with a community center, numerous field and courts and more.



The Oakwood dog park is within walking distance as is the Raleigh Greenway along Crabtree Creek.

