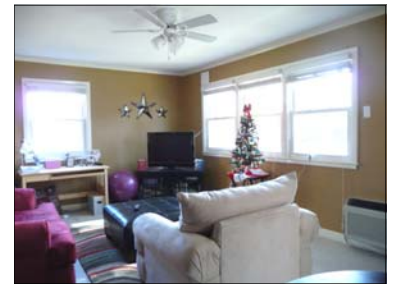




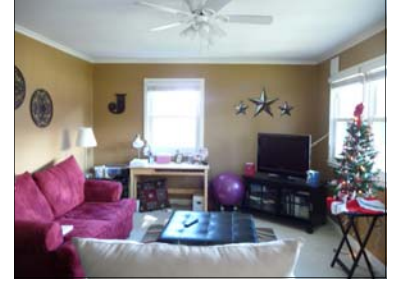
Live, work and play in Cameron Village, an enduring community of shops, restaurants, condos and single family homes

East-facing double front windows let in lots of light and a refreshing cross breeze when opened in the 18 foot long living/dining room.



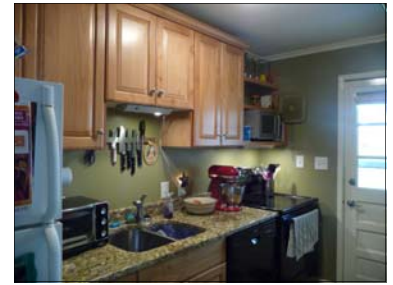
The park-like view from your 2nd floor porch and living room includes the modernist single family homes across the street that were part of the Cameron Village development.

This "not so big house" includes hooks-ups for stacked clothes washer/dryer recessed in a utility closet.



There is plenty of parking on the street in front and assigned parking close to your kitchen door in back.

The kitchen has updated cabinets, appliances and a solid surface counter.



Numerous side-walk restaurants are part of the charm of the Village that has been gracefully reinventing and reinvigorating itself since the late 1940's.

The insulated windows were part of the updates when the Village was converted to condos.



You are surrounded by nearby parks - Jaycee, Pullen and Fletcher shown here.

The Regional Public Library is in the Village next to the Fresh Market. The 1950s Cameron Village development was inspired by a similar area in Kansas City and the policies of the Urban Land Institute.



NC State University is a 10 to 15 minute walk away, as is the YMCA.

The new Shoppes at Oberlin Court are a few blocks away at the corner of Wade Avenue and Oberlin Road.



Peter Rumsey, Broker 919.971.4118

www.peterRumsey.com